

artos[®]

FS1191

INSTRUCTION MANUAL

trova series shower set

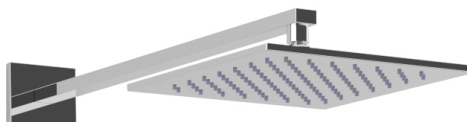
BRUSHED NICKEL(BN)



CHROME(CH)



BLACK(BK)



artos[®]

FS1191

trova series shower set

OPERATING SPECIFICATIONS

FEATURES

3-Outlets

INCLUDES

F903B-59TK

F703-6

F907-50

F905-1

OPERATING PRESSURE

Minimum: 15 psi

Maximum: 75 psi

Above 90psi it may be necessary to install a pressure reducer

OPERATING TEMPERATURE

Maximum: 176°

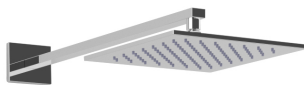
FLOW CAPACITY

Hand Shower: 2.0 USGPM

Shower Head: 1.8 USGPM

Tub filler: 6.1 USGPM

F901-8 APPROVAL



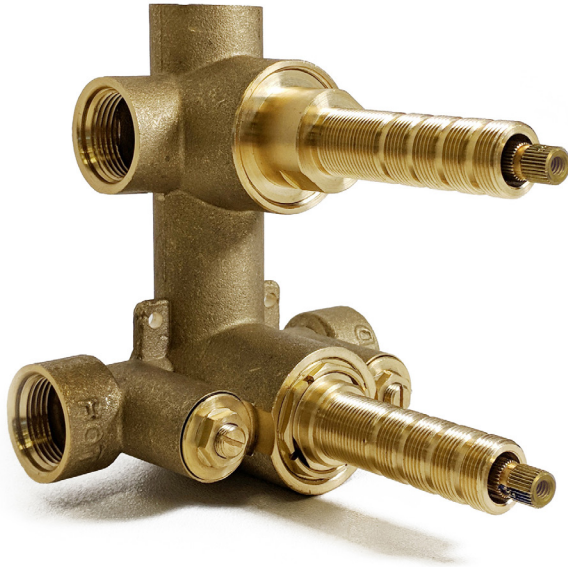
artos[®]

FS1191

trova series shower set

OPERATING SPECIFICATIONS

F943-VO 3/4" thermostatic mixer with
3-way diverter



FEATURES

- Solid Brass
- 2 or 3 functions + OFF positions
- Shared diverter between functions
- Available 1/2" and 3/4" adapters included

MIXED WATER TEMPERATURE

Maximum: 120°F

HOT WATER SUPPLY TEMPERATURE

Maximum: 180°F

Minimum: 50°F

Advisable: 150°F- 160°F

Minimum difference between hot mixed temperature 50°F

OPERATING PRESSURE

Maximum: 125psi

Minimum: 20psi

Recommended: 30psi- 95psi

Operating pressures (on hot and cold lines) should be kept as balanced as possible, in order to assure the maximum efficiency.

FLOW RATE

8.0 USGPM

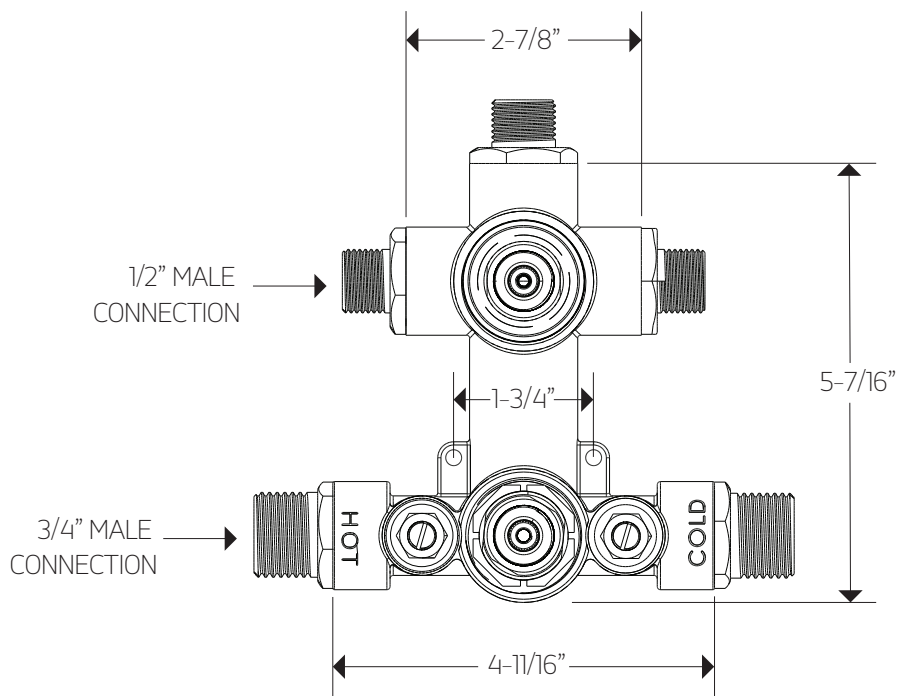
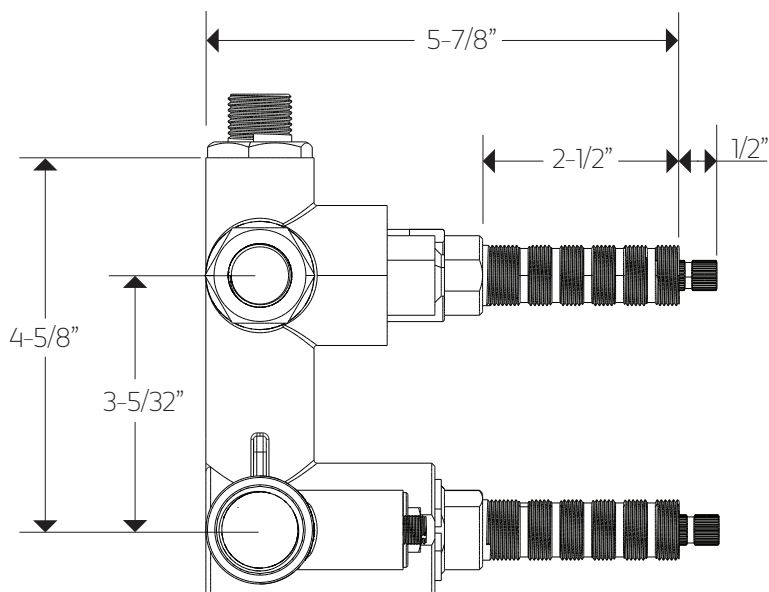


artos[®]

FS1191

PRODUCT DIMENSIONS

trova series shower set



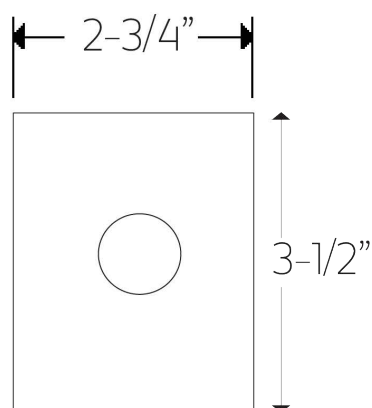
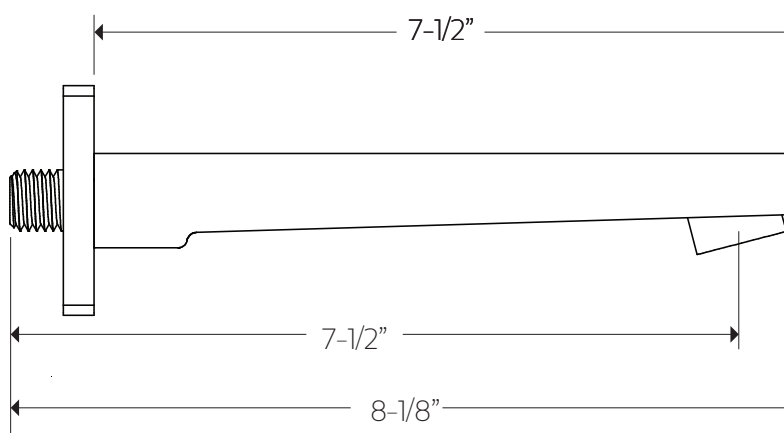


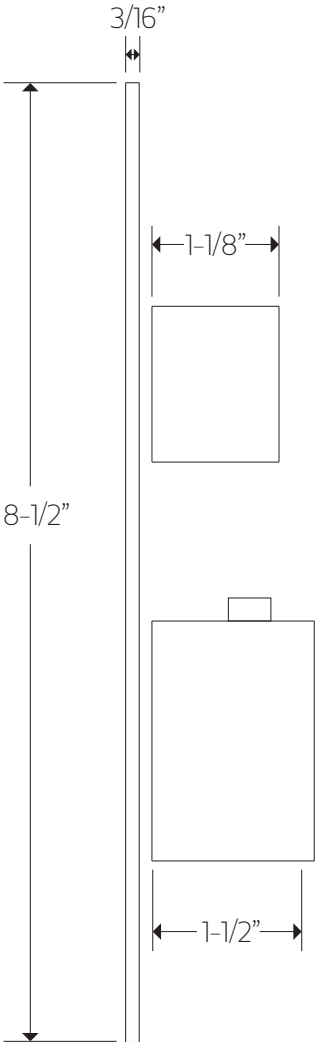
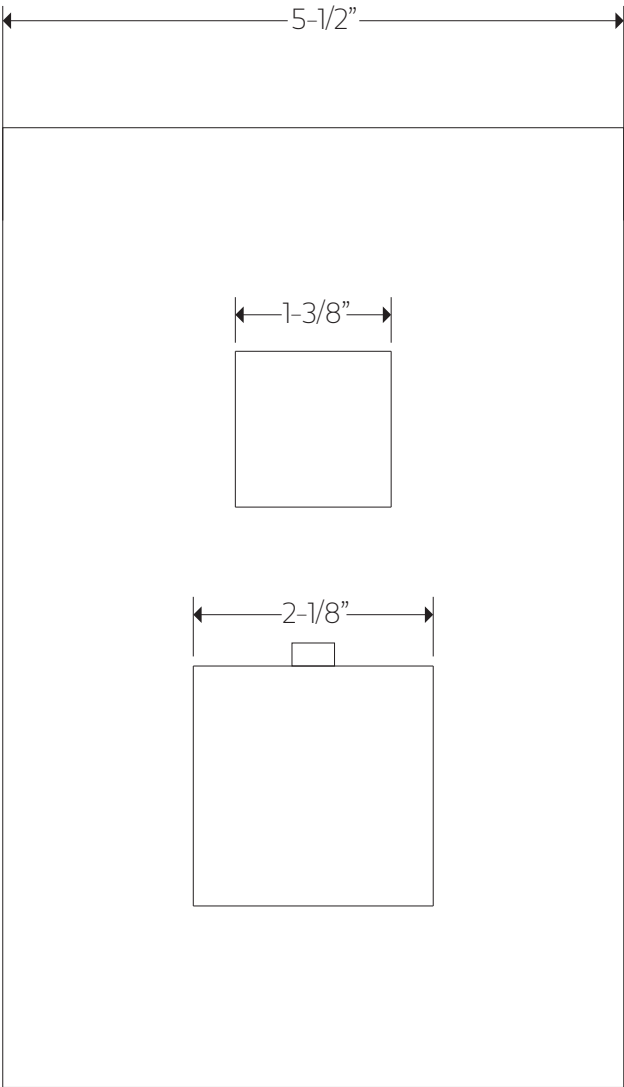
FS1191

TECHNICAL DATA SHEET

trova series shower set

square wall mount tub
filler





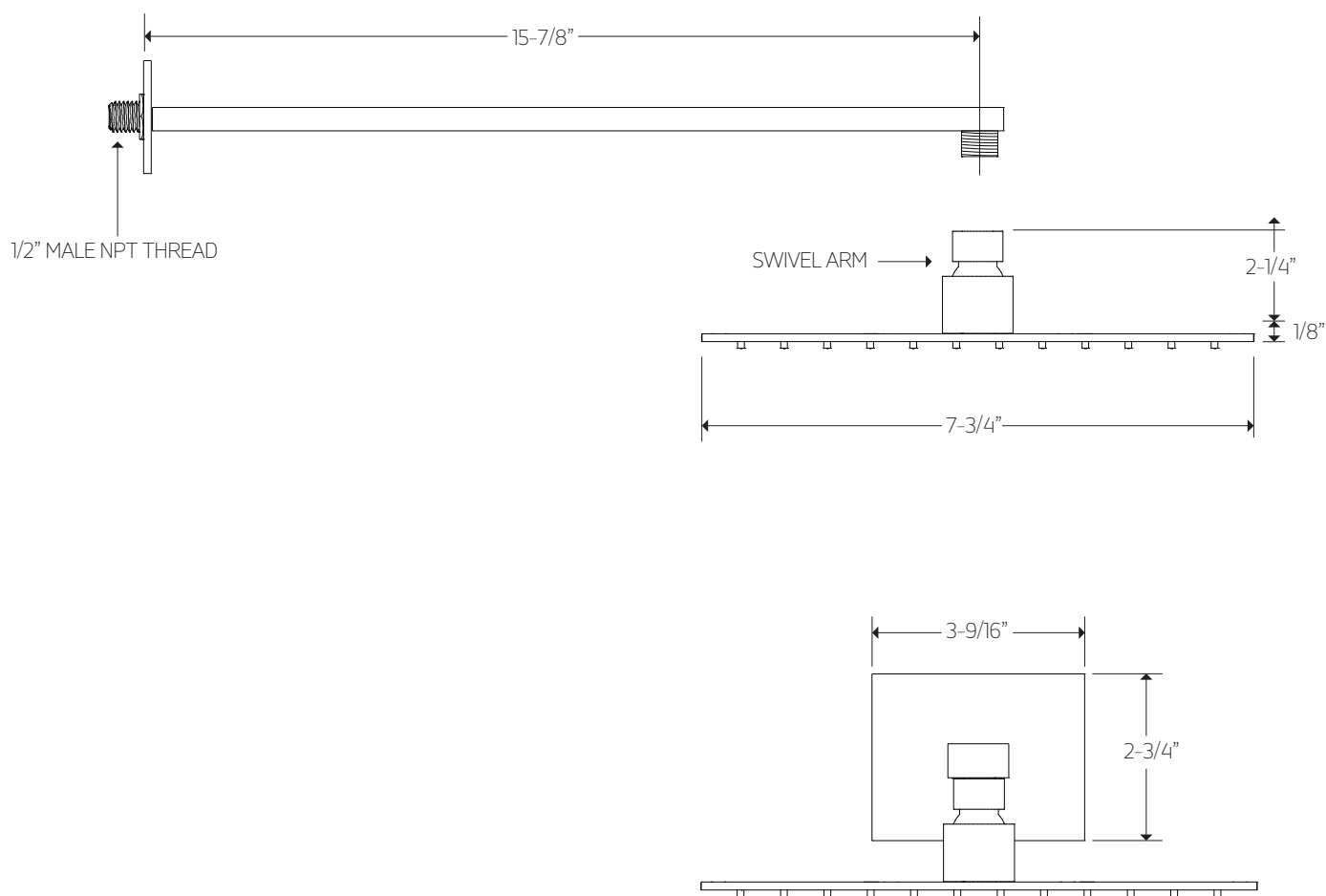
artos[®]

FS1191

trova series shower set

PRODUCT DIMENSIONS

for F907-50



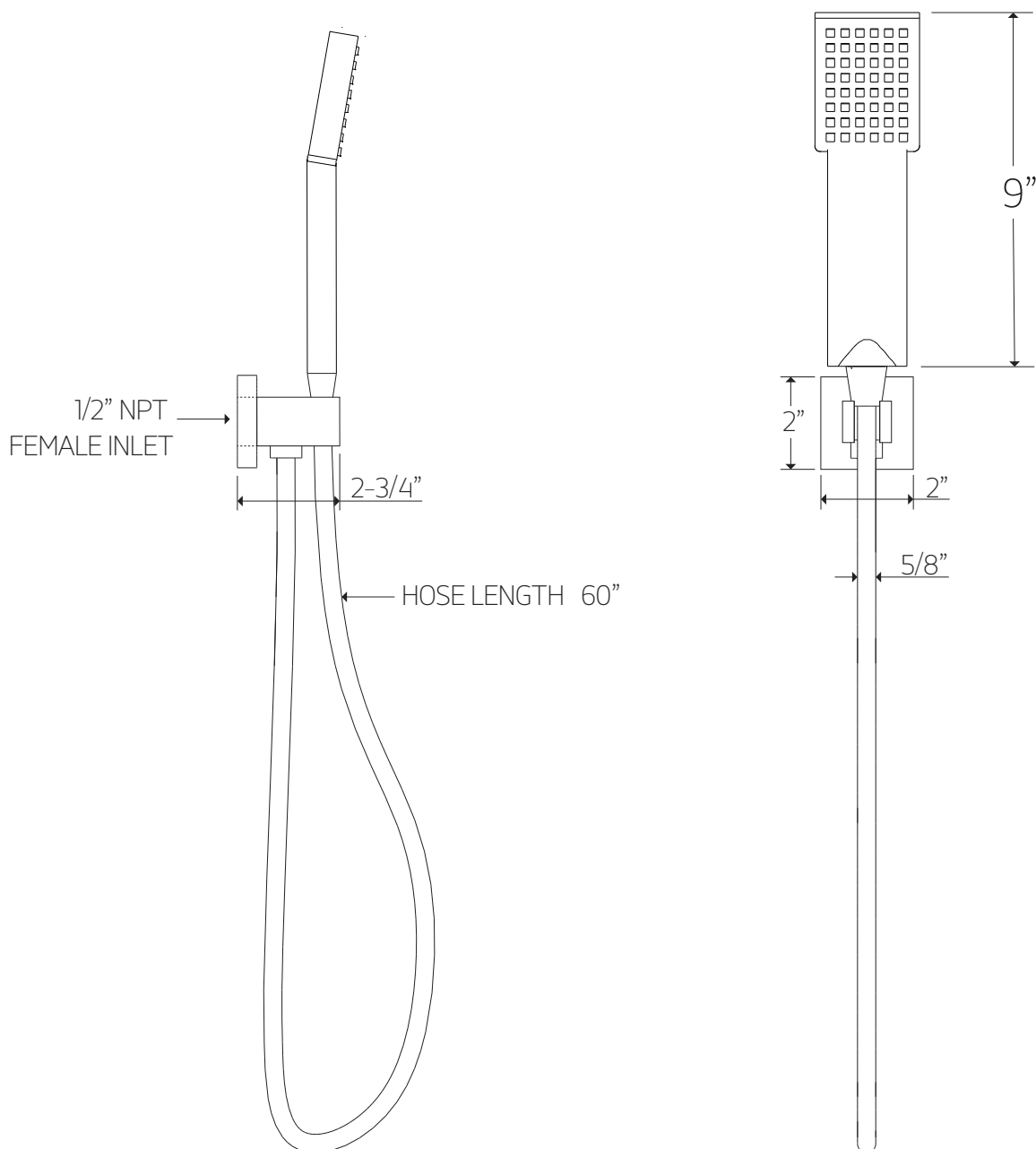
artos[®]

FS1191

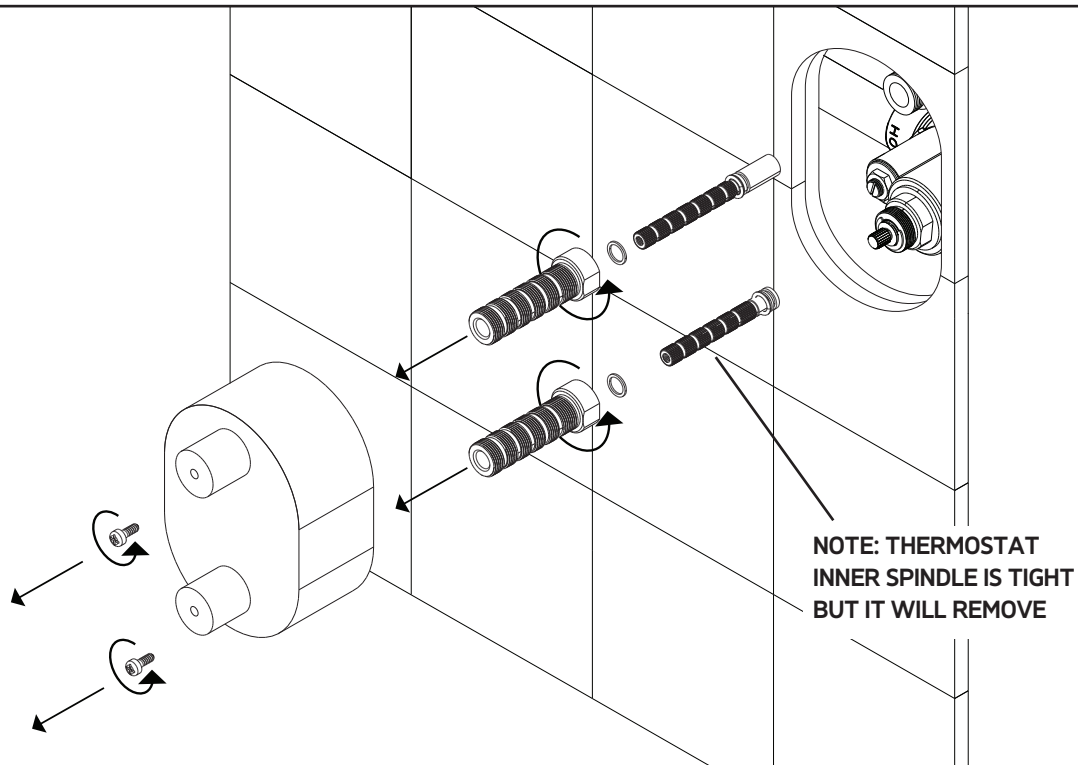
PRODUCT DIMENSIONS

trova series shower set

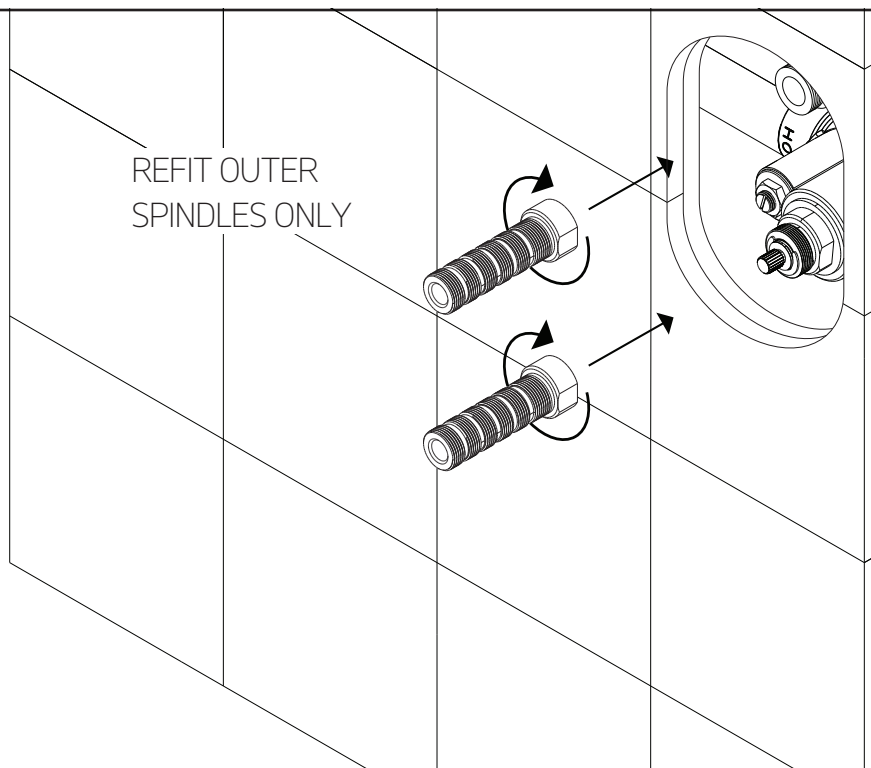
for F703-6



STEP 1



STEP 2

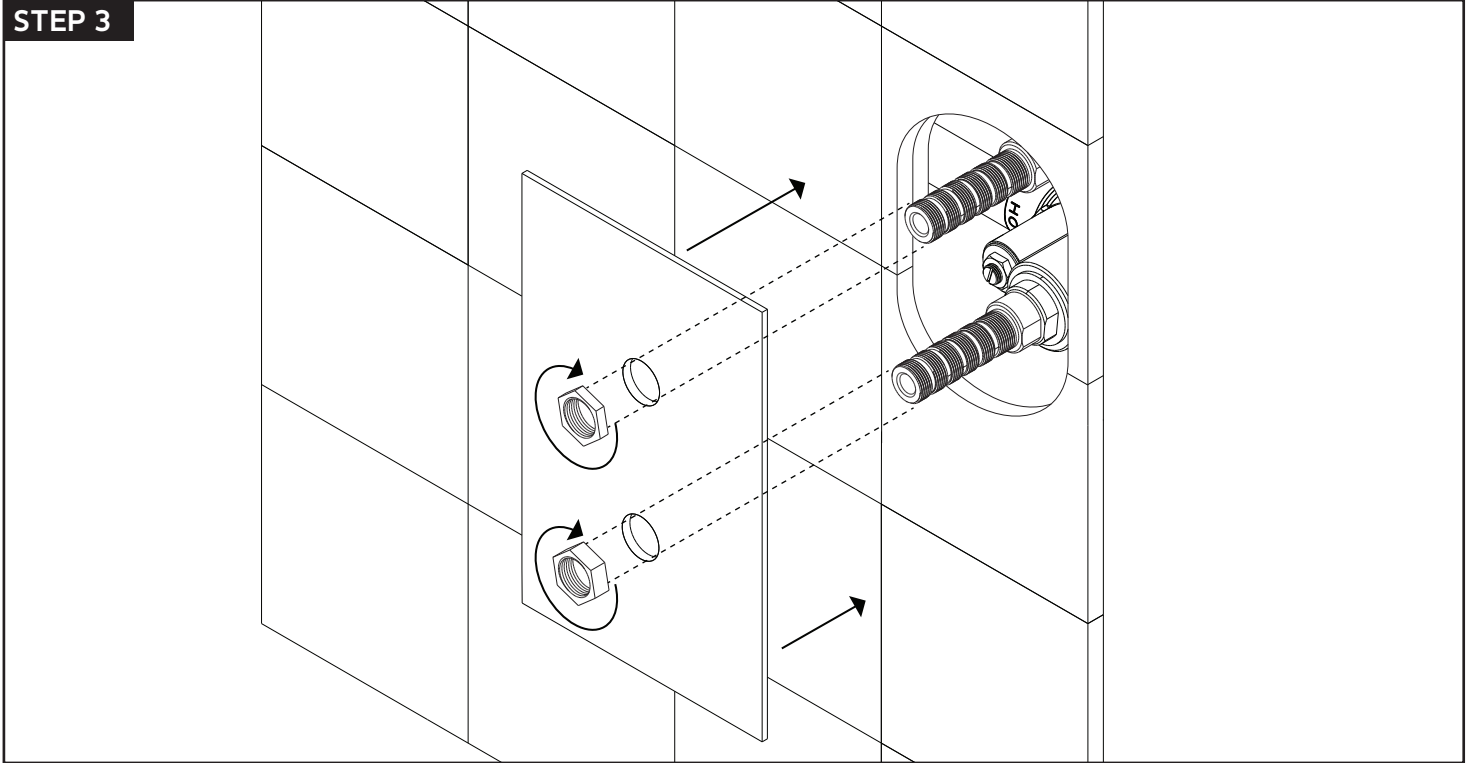


artos[®]

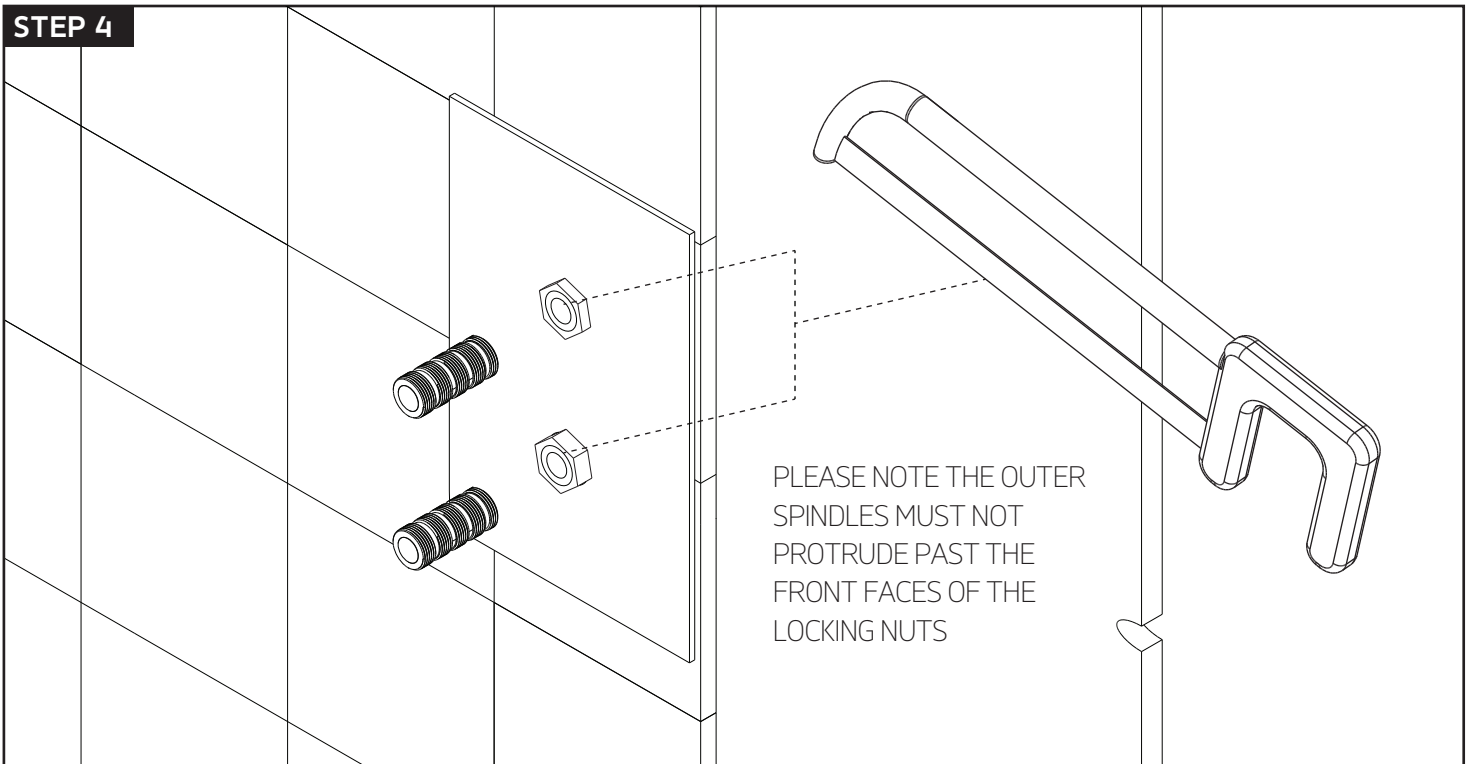
FS1191

trova series shower set

STEP 3



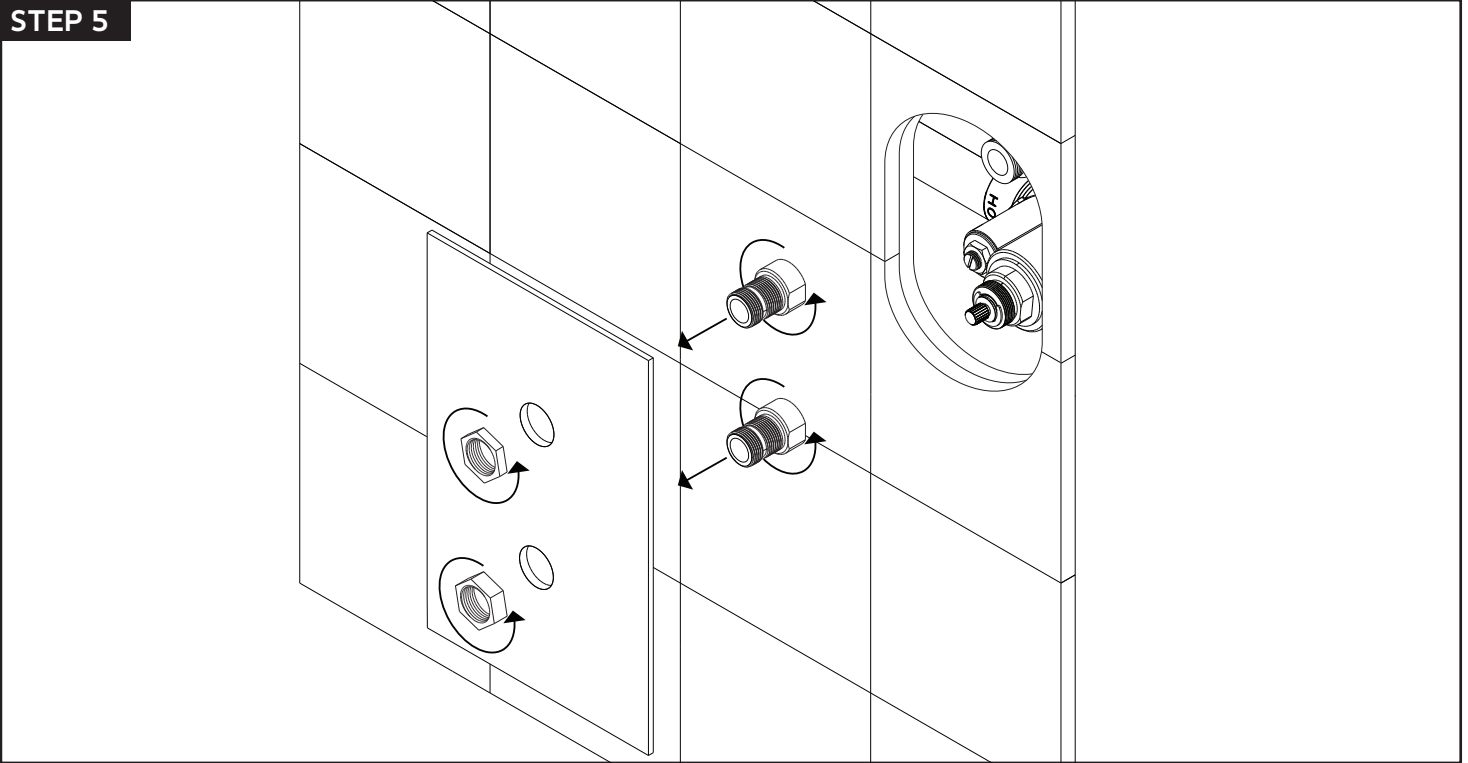
STEP 4



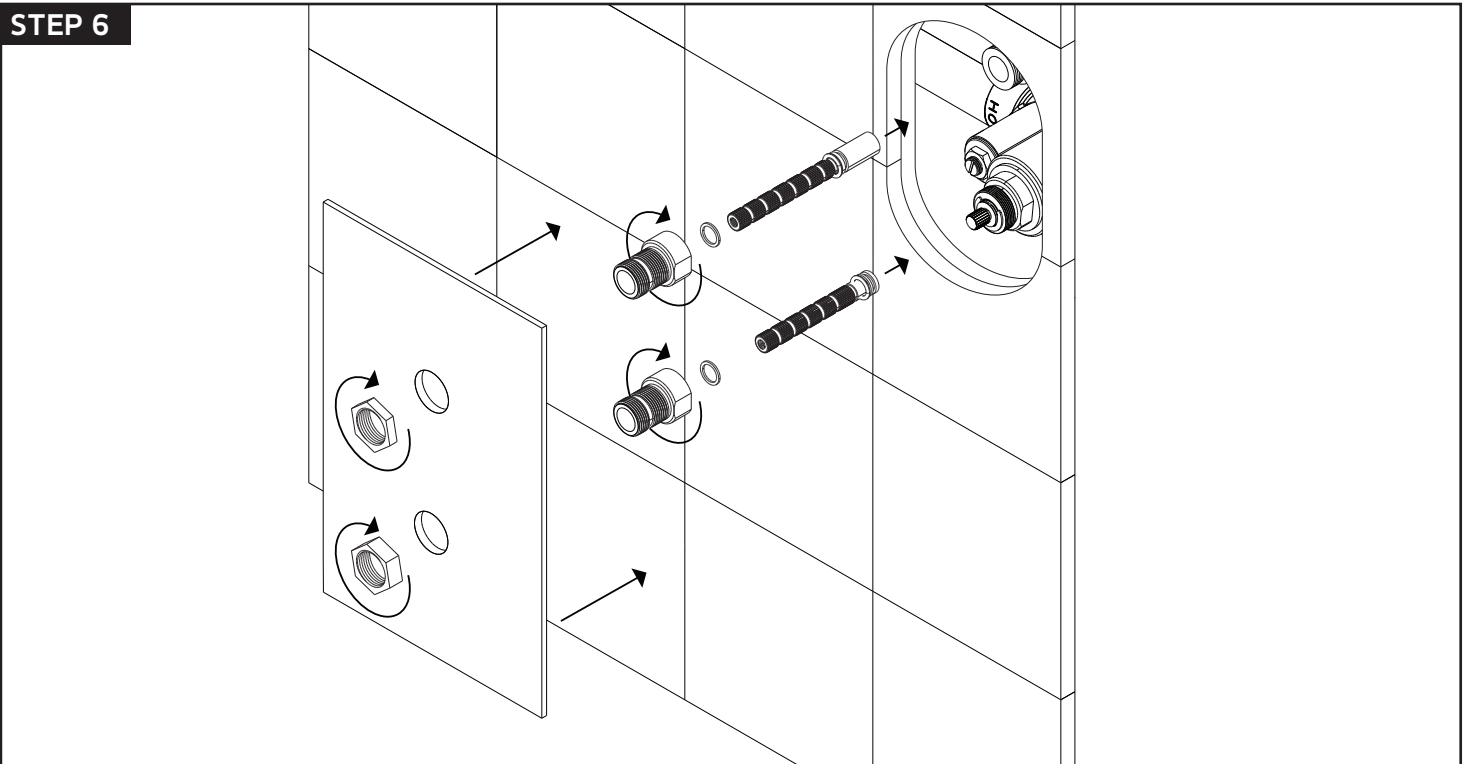
INSTALLATION STEPS

for F903B-59TK

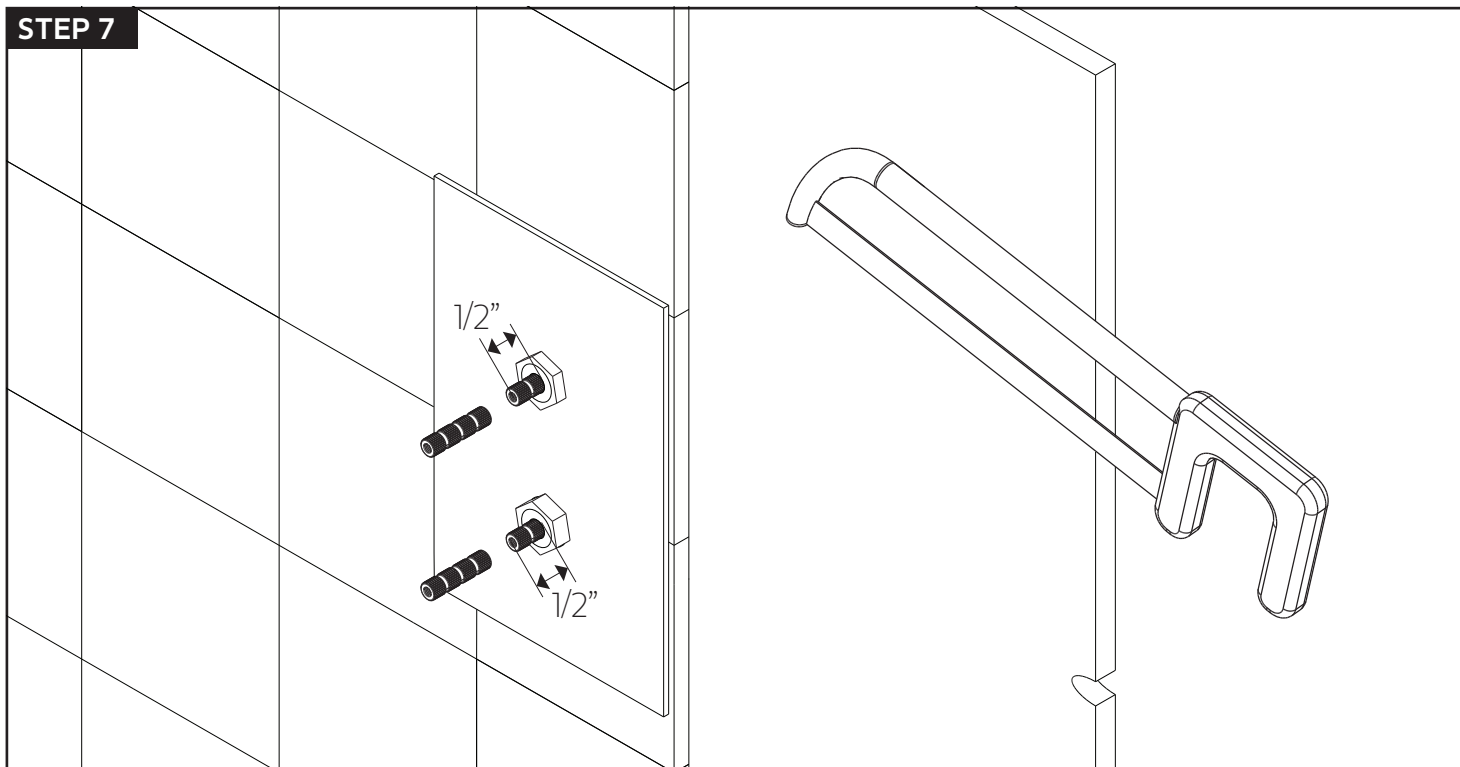
STEP 5



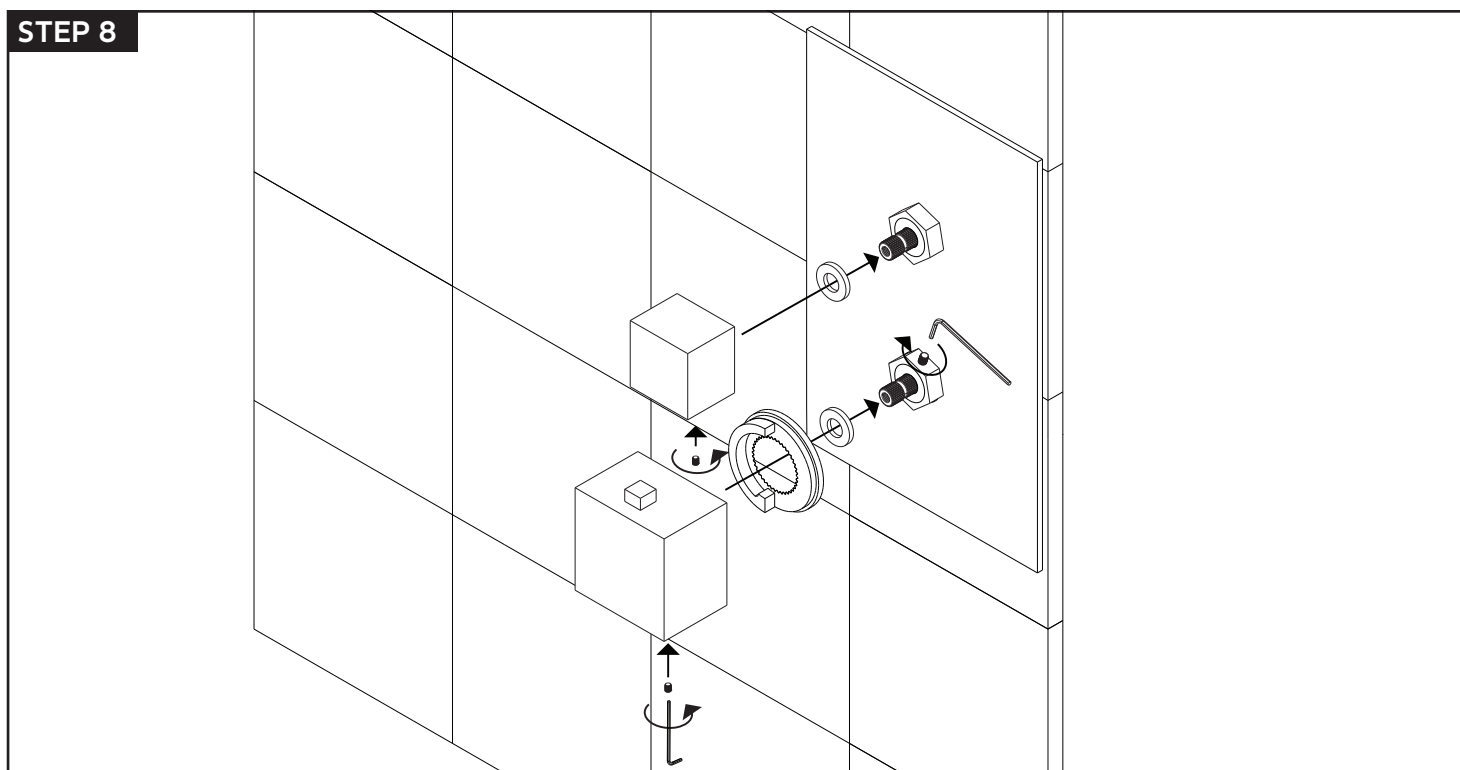
STEP 6



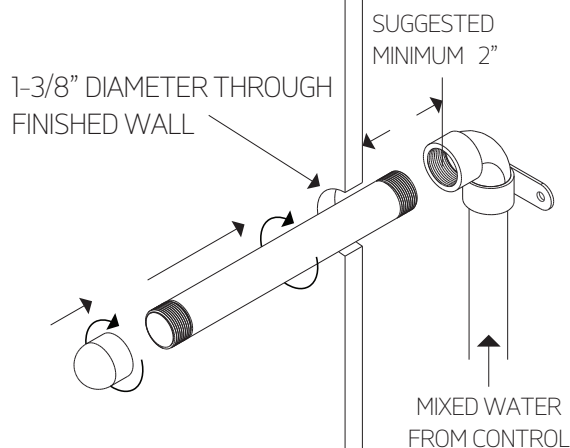
STEP 7



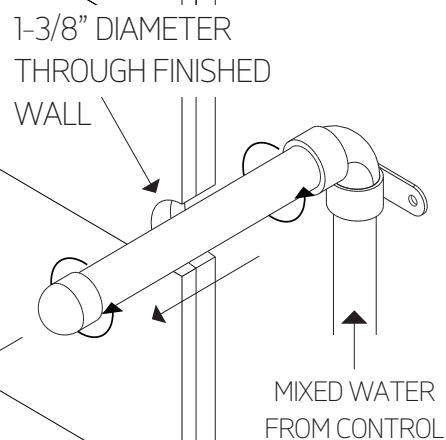
STEP 8



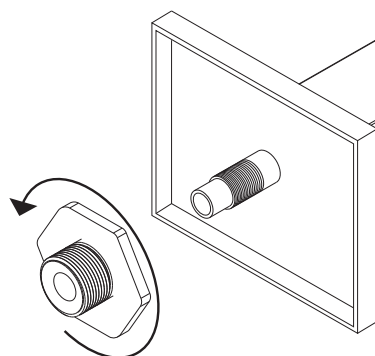
STEP 1



STEP 2



STEP 3

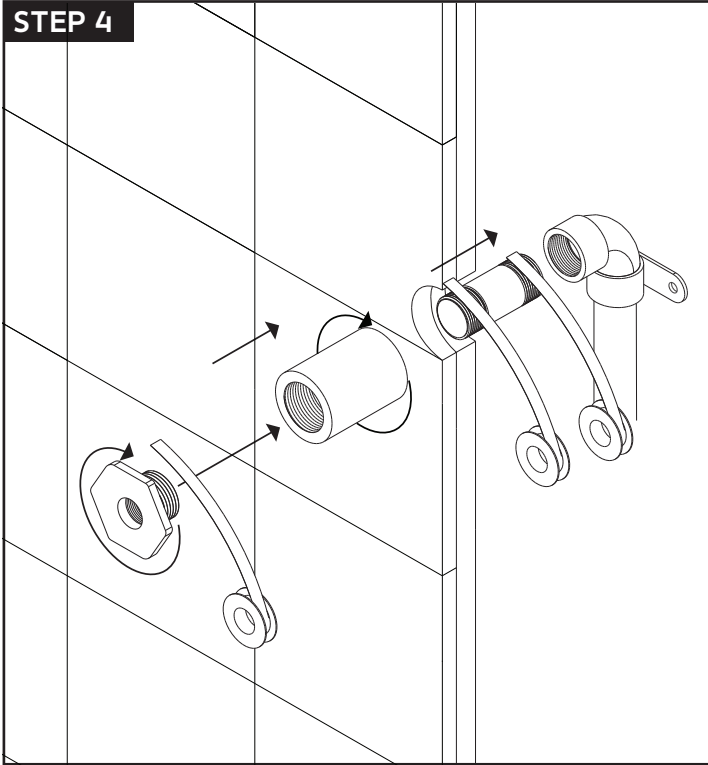


artos[®]

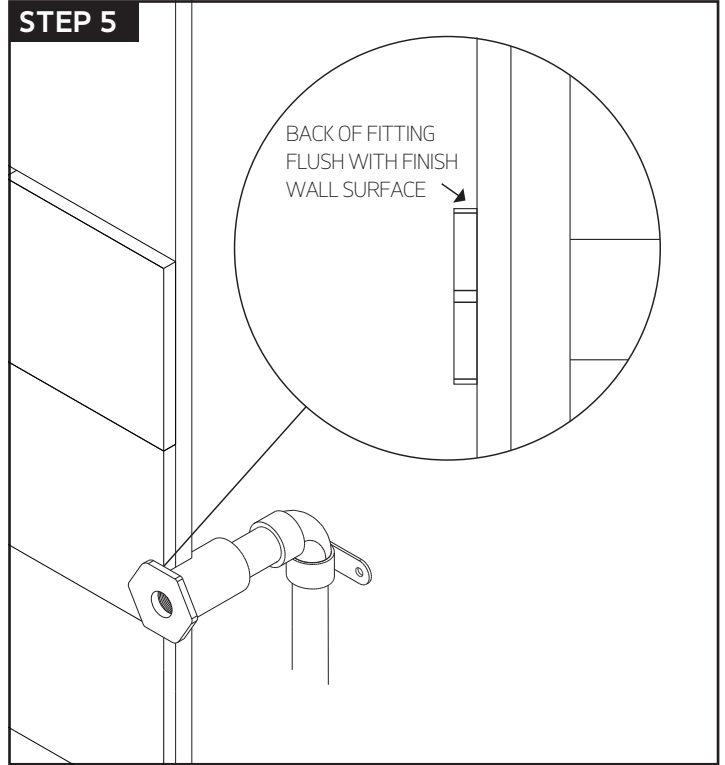
FS1191

trova series shower set

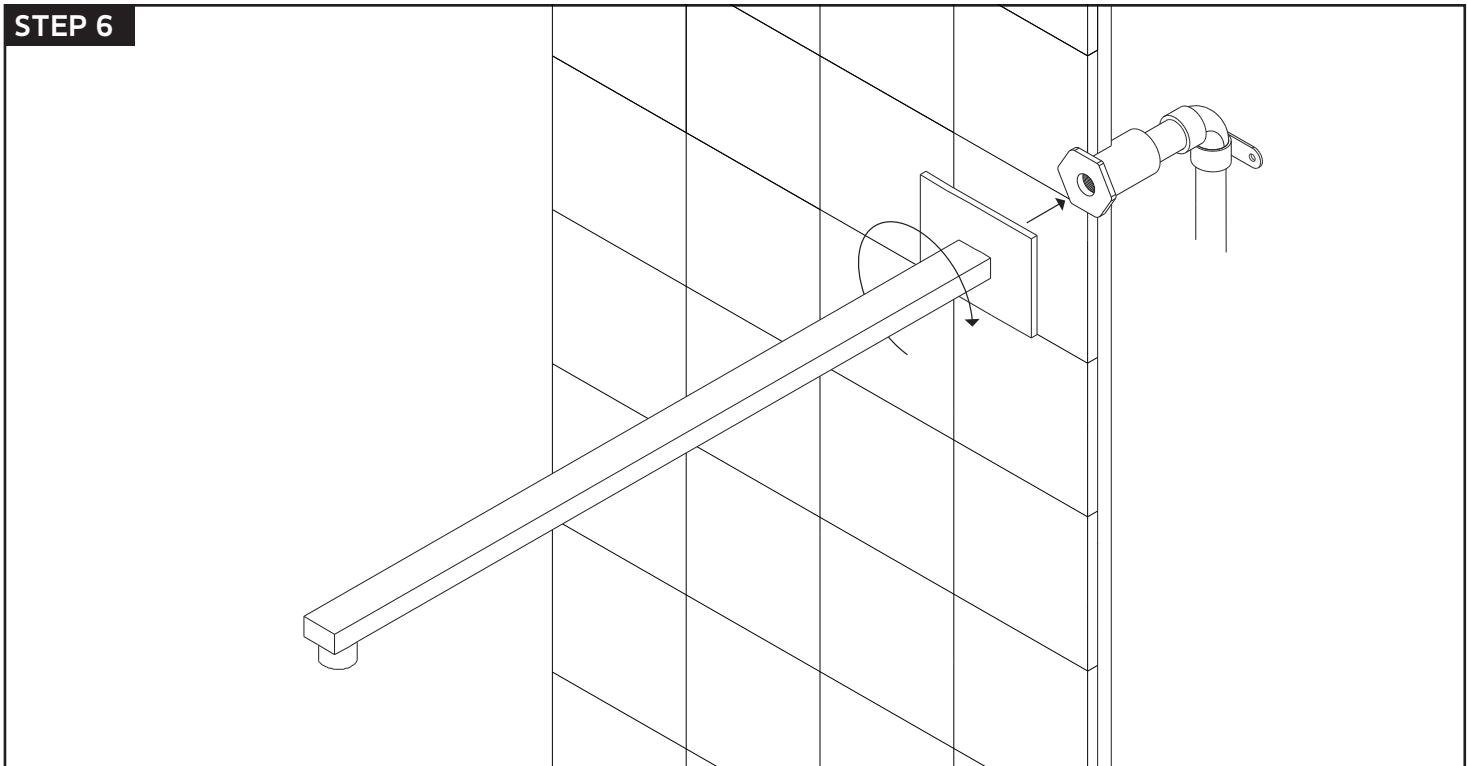
STEP 4



STEP 5



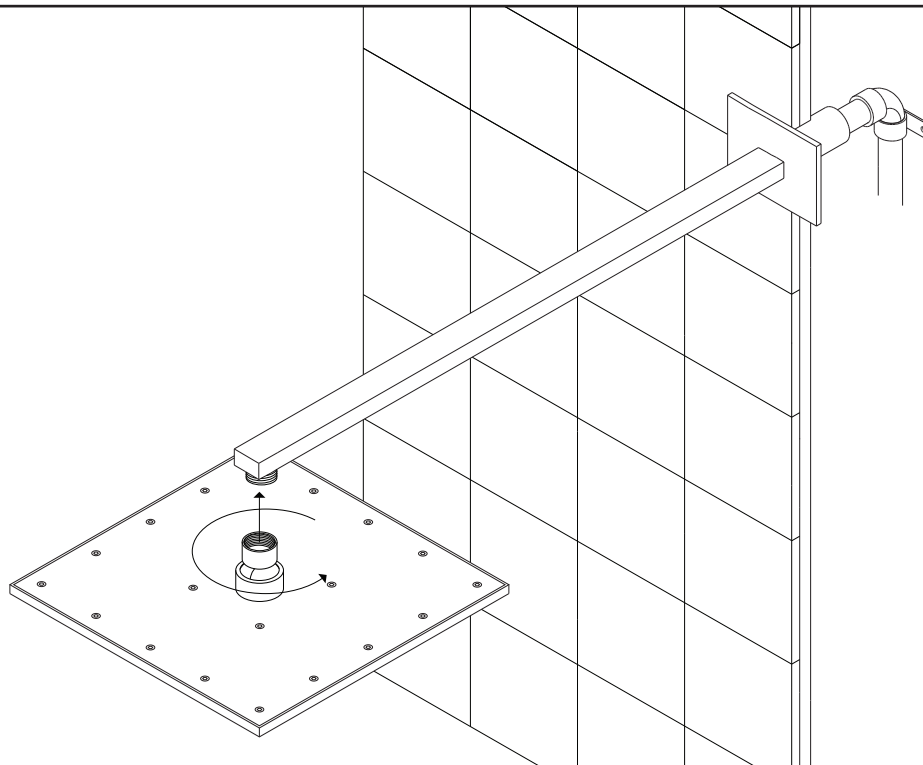
STEP 6



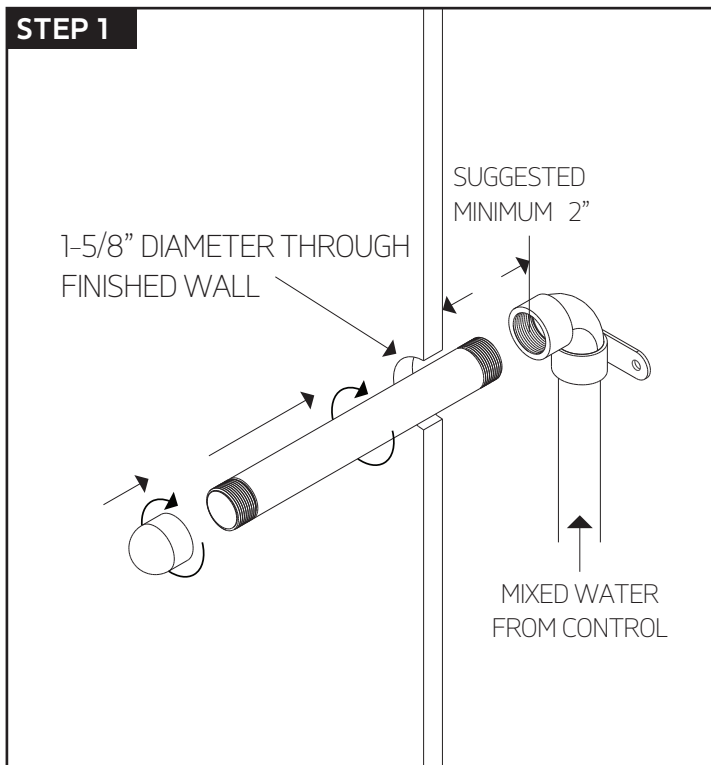
INSTALLATION STEPS

for F907-50

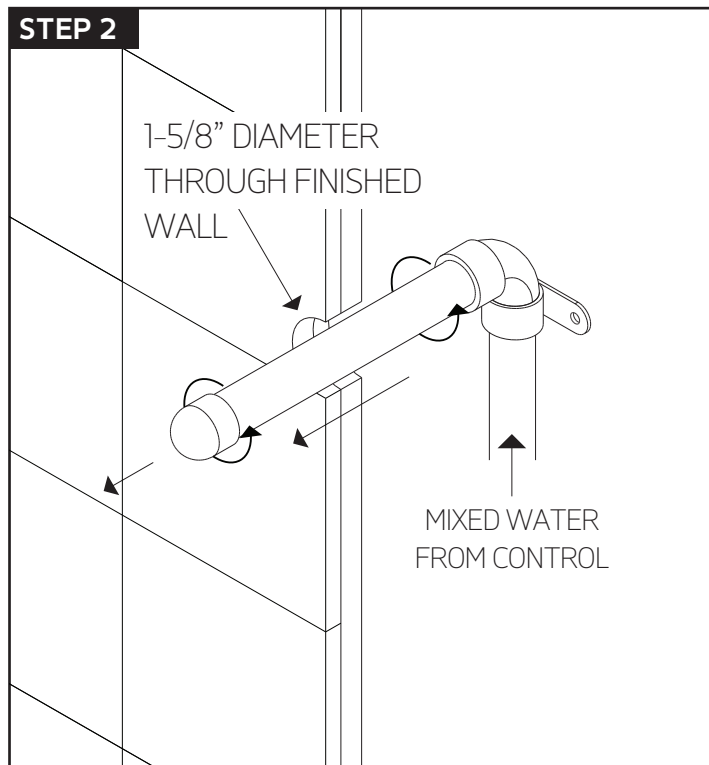
STEP 7



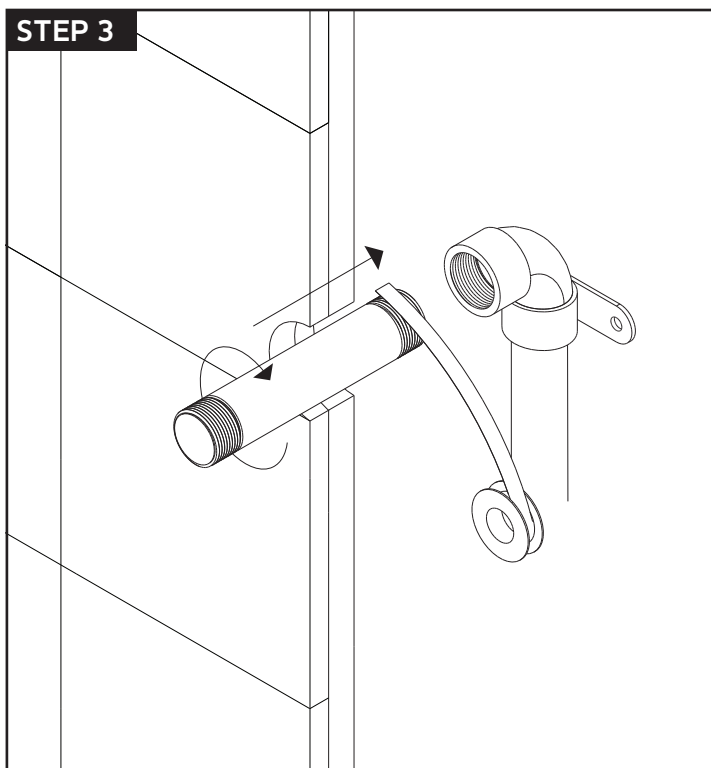
STEP 1



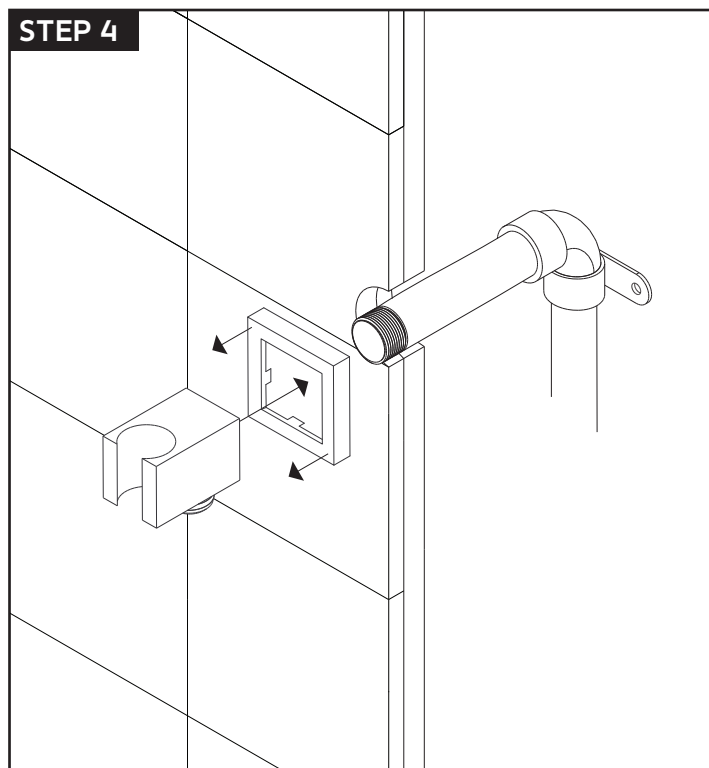
STEP 2



STEP 3



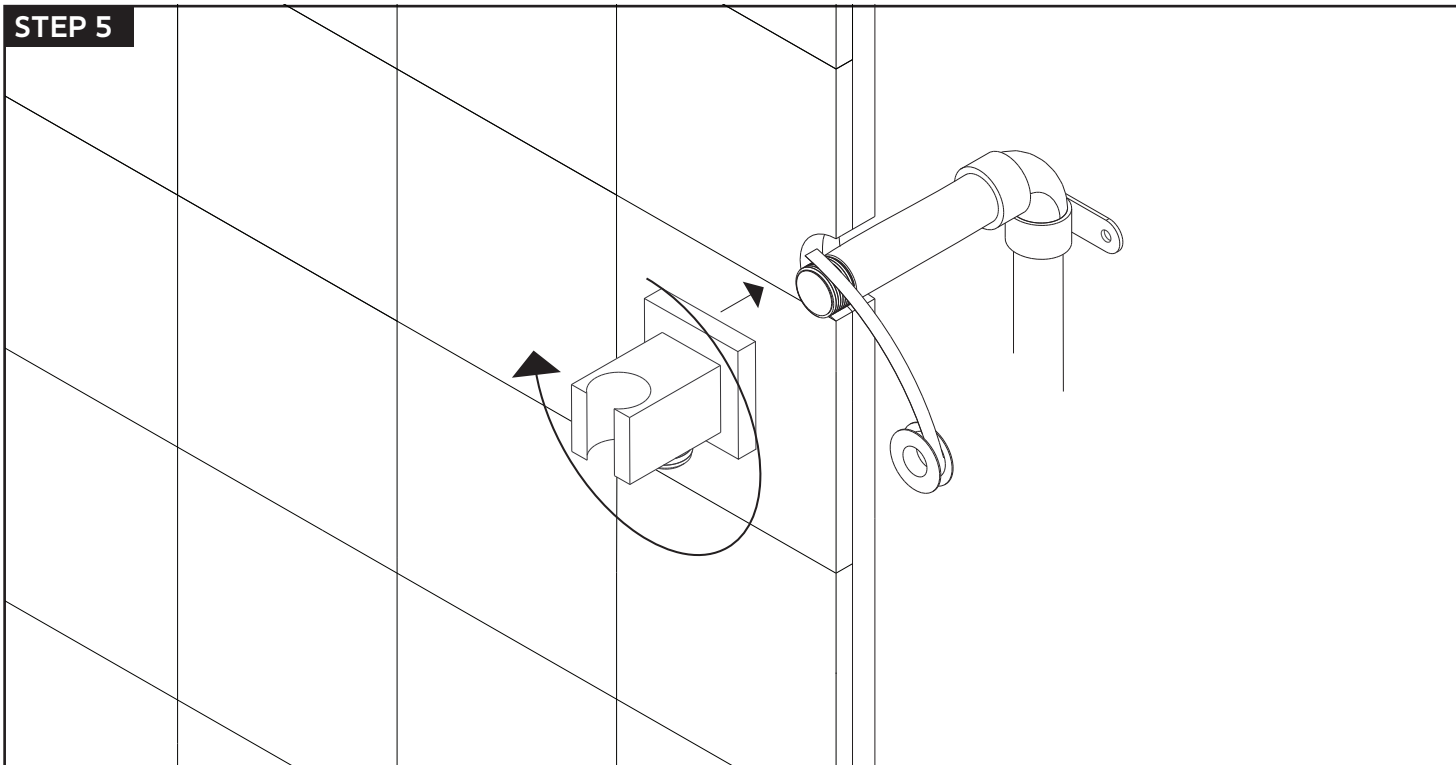
STEP 4



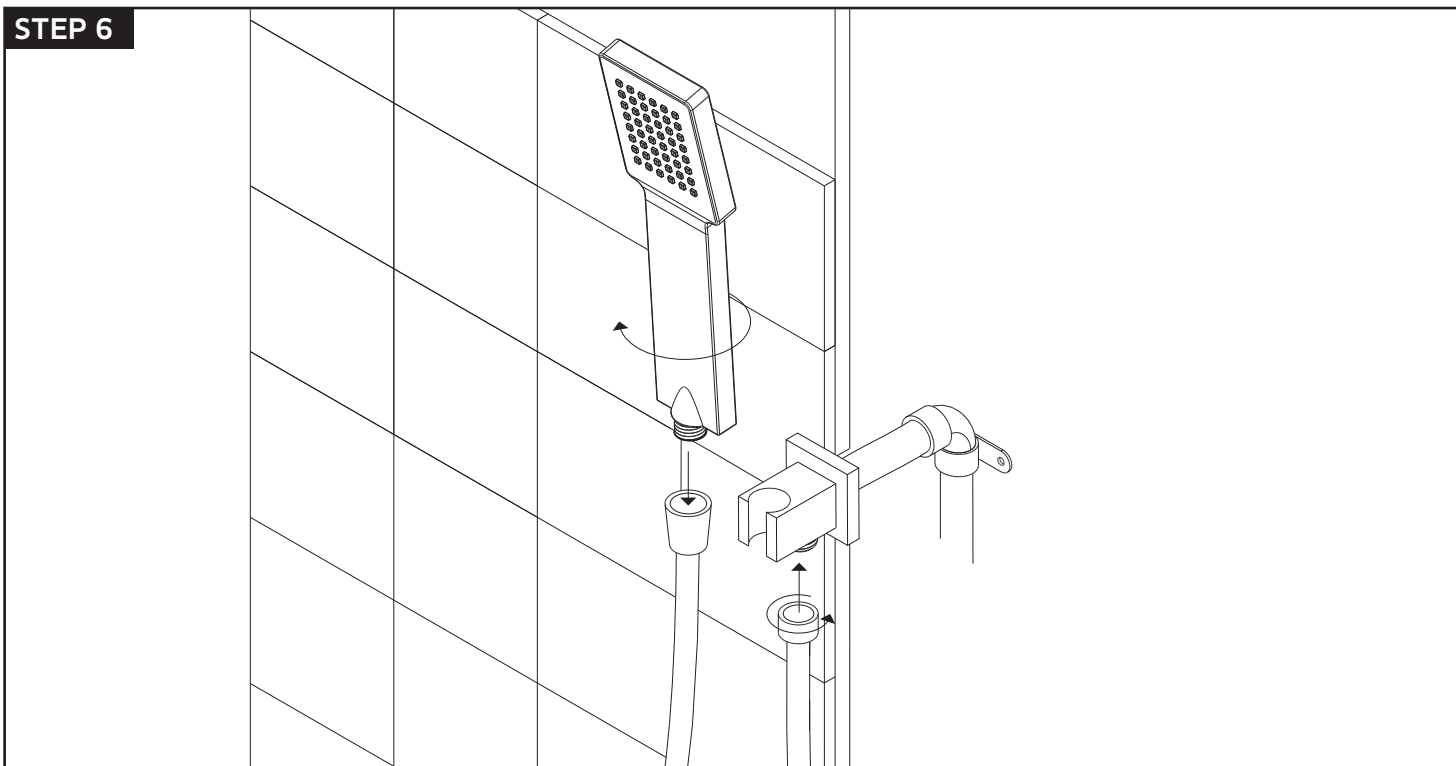
INSTALLATION STEPS

for F703-6

STEP 5



STEP 6



STEP 1

1-5/8" DIAMETER THROUGH
FINISHED WALL

SUGGESTED
MINIMUM 2"

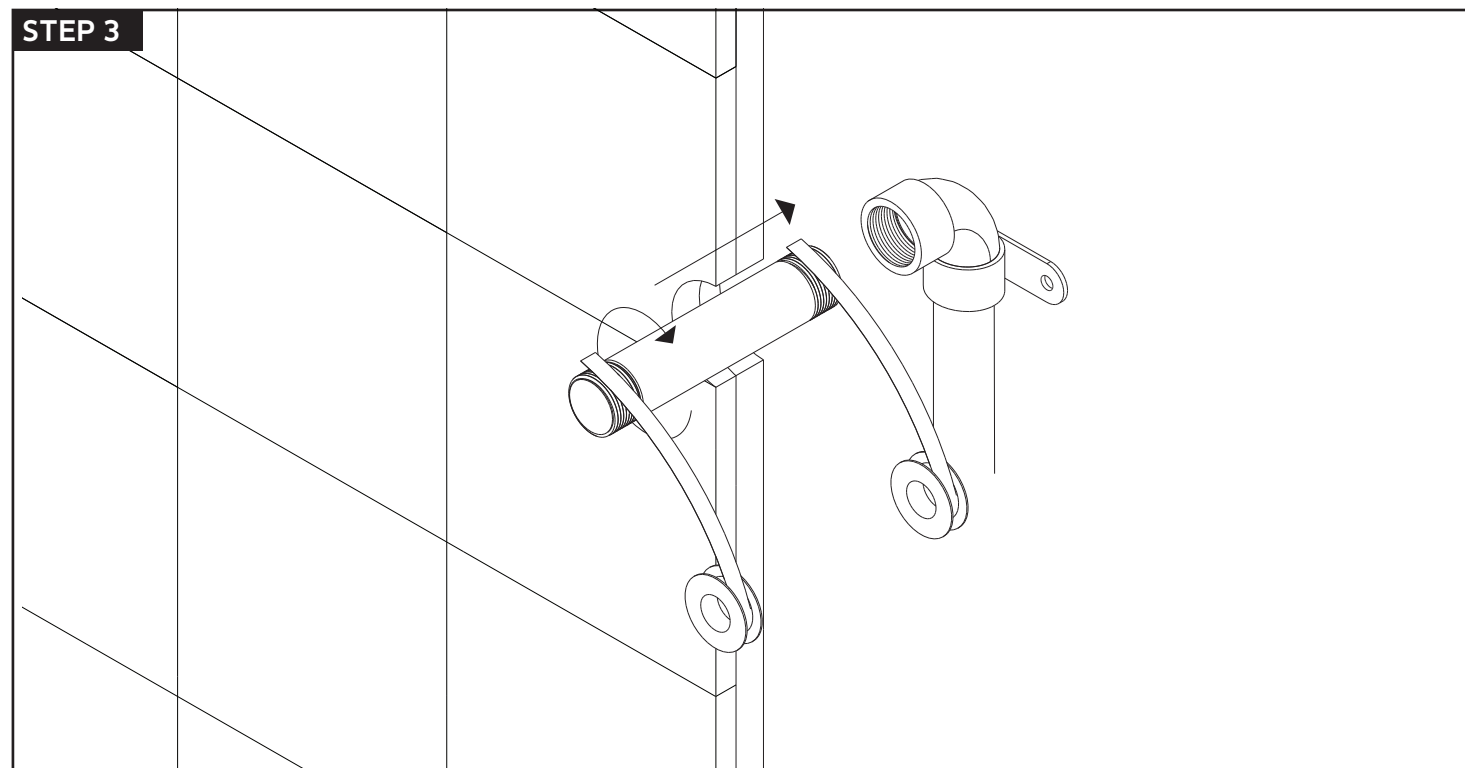
MIXED WATER
FROM CONTROL

STEP 2

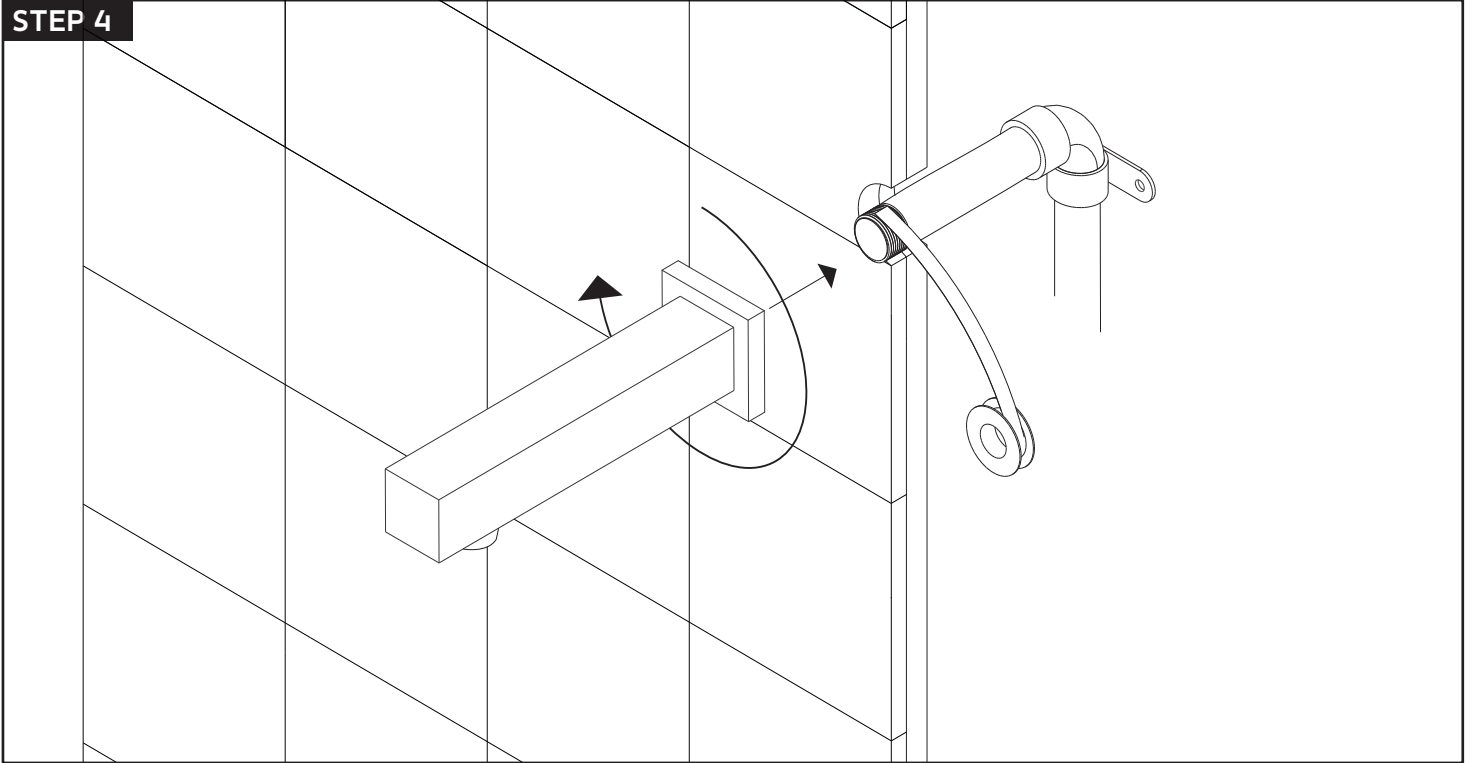
1-5/8" DIAMETER
THROUGH FINISHED
WALL

MIXED WATER
FROM CONTROL

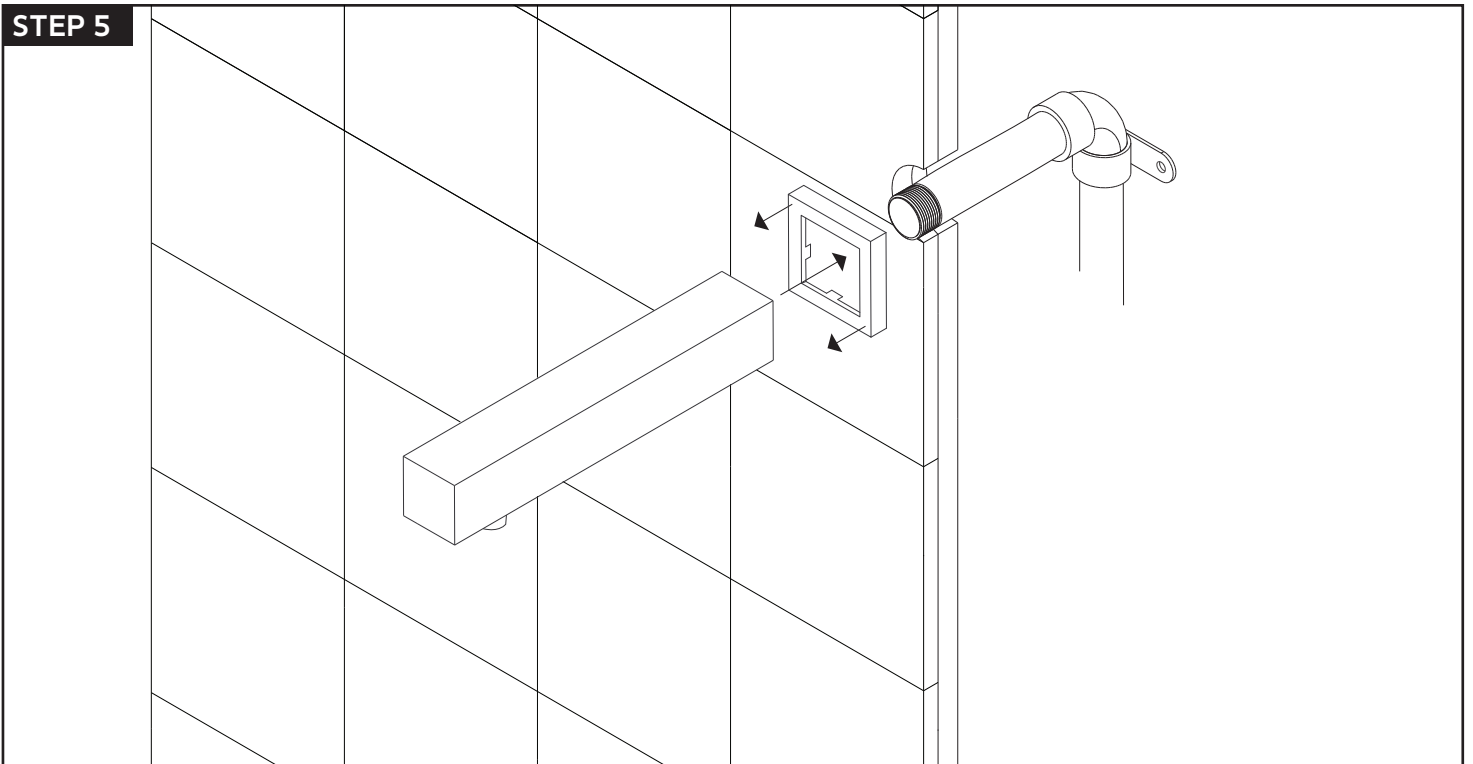
STEP 3

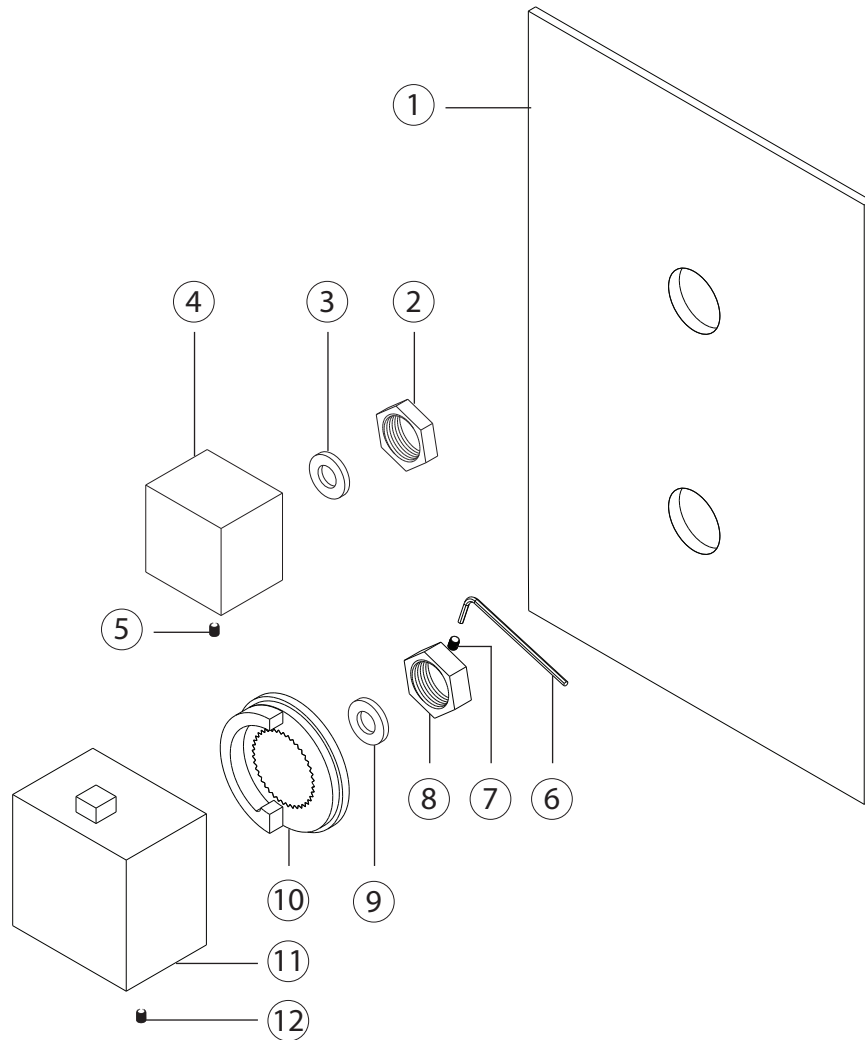


STEP 4

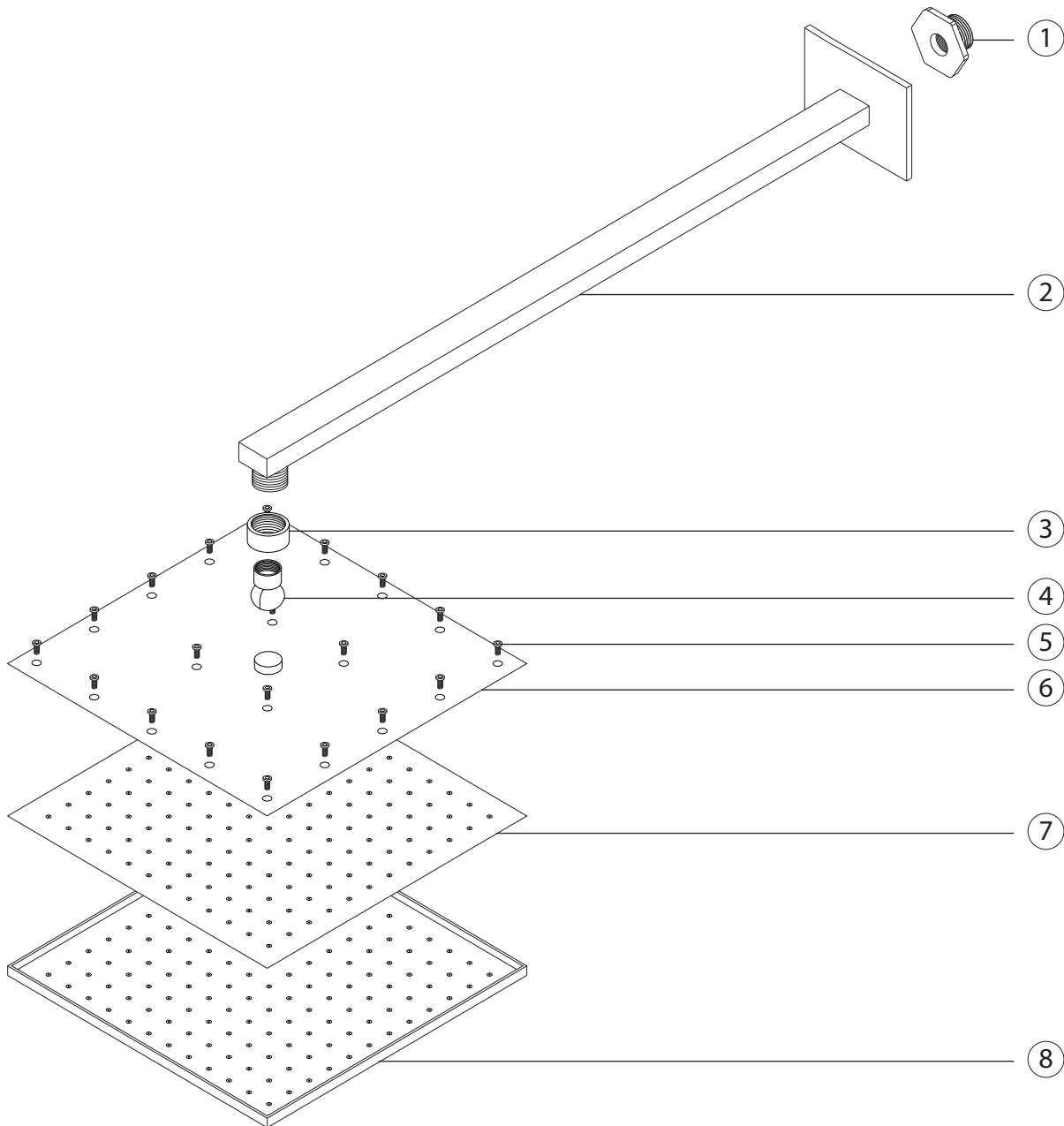


STEP 5

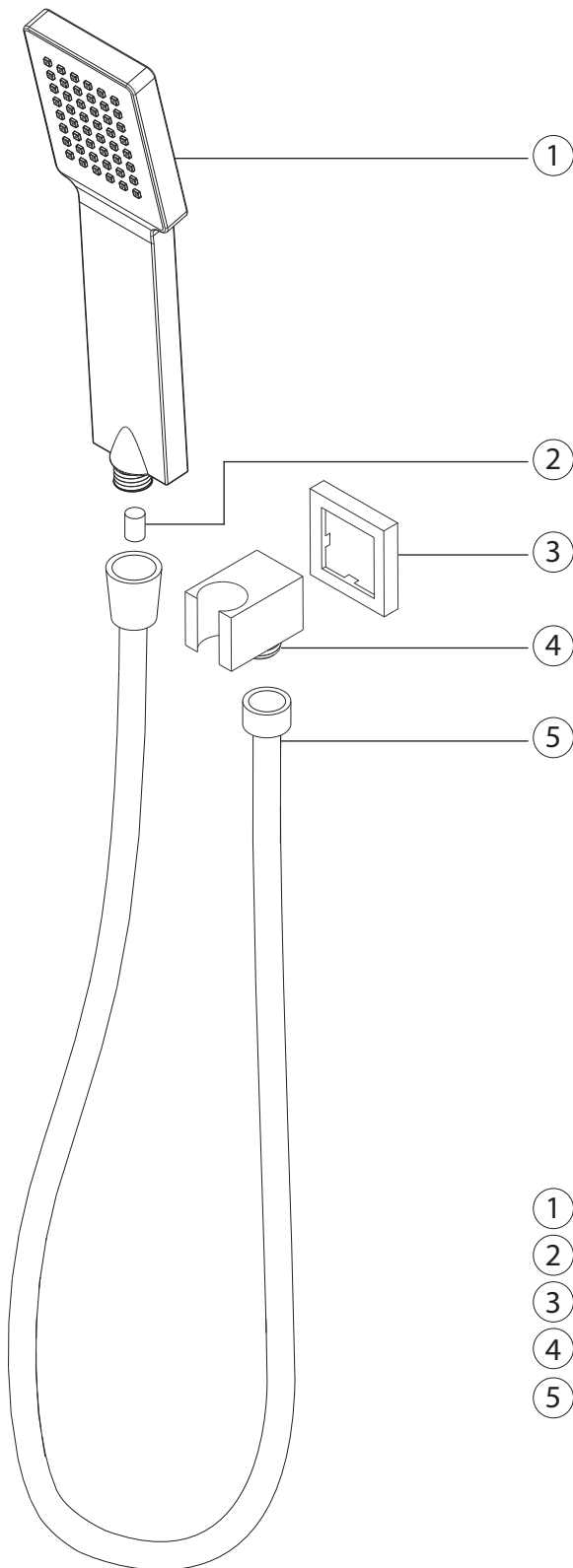




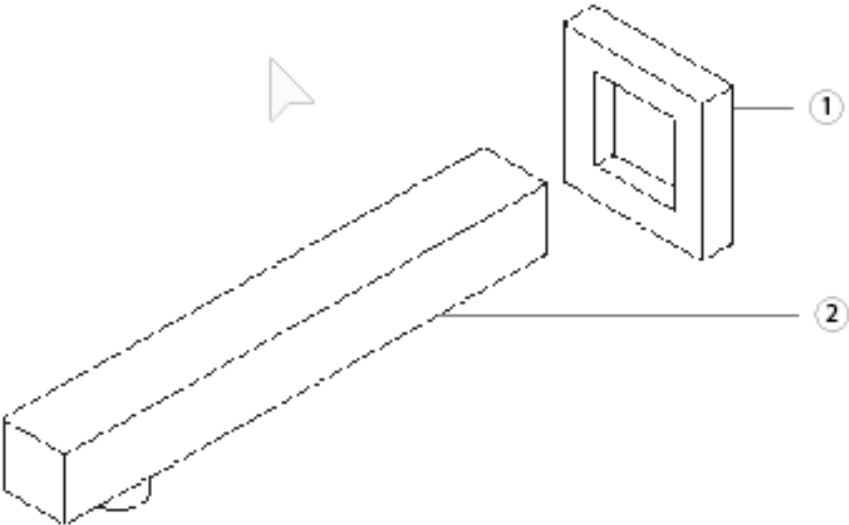
- | | |
|---|--|
| ① ESCUTCHEON F903B-59TK XP1 | ⑧ THERMOSTAT LOCKING NUT F903B-59TK XP8 |
| ② DIVERTER LOCKING NUT F903B-59TK XP2 | ⑨ NYLON WASHER F903B-59TK XP9 |
| ③ NYLON WASHER F903B-59TK XP3 | ⑩ TEMPERATURE LIMITING RING F903B-59TK XP10 |
| ④ DIVERTER HANDLE F903B-59TK XP4 | ⑪ THERMOSTAT HANDLE F903B-59TK XP11 |
| ⑤ DIVERTER SET SCREW F903B-59TK XP5 | ⑫ THERMOSTAT SET SCREW F903B-59TK XP12 |
| ⑥ ALLEN WRENCH F903B-59TK XP6 | |
| ⑦ LOCKING NUT SET SCREW F903B-59TK XP7 | |



- | | |
|--|---|
| ① SHOWER FITTING F907-50 XP1 | ⑦ RUBBER MATRIX F907-50 XP7 |
| ② SHOWER ARM F907-50 XP2 | ⑧ SHOWER HEAD BOTTOM F907-50 XP8 |
| ③ SWIVEL ARM SECURING NUT F907-50 XP3 | |
| ④ SWIVEL ARM F907-50 XP4 | |
| ⑤ SHOWER HEAD SCREWS F907-50 XP5 | |
| ⑥ SHOWER HEAD TOP F907-50 XP6 | |



- ① **HAND SHOWER** F703-6 XP1
- ② **HAND SHOWER CHECK VALVE** F703-6 XP2
- ③ **ESCUTCHEON PLATE** F703-6 XP3
- ④ **SHOWER OUTLET ELBOW AND HOLDER** F703-6 XP4
- ⑤ **SHOWER HOSE** F703-6 XP5



- 1
- 2



FS1191

trova series shower set

CARE & MAINTENANCE

For best results, keep the following in mind to retain the high quality finish of your artos® shower kit:

- Use a soft, dampened sponge or cloth. On no account should you use an abrasive material such as a brush, scouring pad or steel wool to clean surfaces.
- Test your cleaning agent solution on an inconspicuous area before applying to the entire product.
- Wipe surfaces clean and rinse completely with water immediately after applying cleaning agent.
- An ideal cleaning technique is to rinse faucet thoroughly and blot dry any water from the surface after each use.

LIMITED LIFETIME WARRANTY

artos® shower kits are guaranteed for life against leaks and finishing defects for as long as the original purchaser owns it.

Damage caused by accident, misuse, abuse, improper installation, improper cleaning or alteration will void the warranty. This warranty does not cover replacement parts where damage is caused by normal wear and tear. Westover, Inc is not responsible for labor charges, installation or other incidental or consequential costs. Proof of purchase must be provided with all claims.

Please register this product online at WWW.ARTOS.US.COM

ITEM NO. **FS1191**
SERIAL NO.