

# artos<sup>®</sup>

## MR06560W

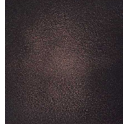
## INSTALLATION GUIDE

ryton towel warmer,  
hardwired

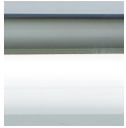
BRUSHED NICKEL(BN)



OIL RUBBED BRONZE(OB)



CHROME(CH)



WHITE(WH)



POLISHED NICKEL(PN)



BLACK(BK)



MR06560W

## OPERATING SPECIFICATIONS

ryton towel warmer,  
hardwired



### FEATURES

Towel warming, drying and auxiliary heating.

### ELEMENT

300W, 110V

### CODES

UL Approved  
CSA-US Approved

### REQUIREMENTS

The towel warmer must be installed so that the Element is at the bottom.

# artos<sup>®</sup>

## MR06560W

## PRODUCT DIMENSIONS

ryton towel warmer,  
hardwired

